

REACCH

by the numbers

23.2 MILLION ACRES
3500 PRODUCERS



4500 STAKEHOLDERS
PARTICIPATED IN REACCH
EXTENSION ACTIVITIES IN YEAR 4

40% OF FARMERS
incorporate winter canola
into their wheat rotations

2274 hits 
on **NITROGEN CYCLE WEBINAR**

Over **1000** high school
students using REACCH
curriculum in **3** states

CLIMATE
MODEL
USED BY
OVER

30
global
research
groups



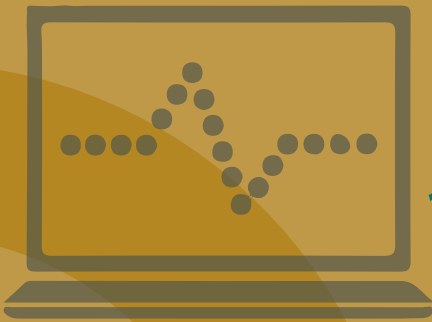
591

views of farmer
case studies

47 farmers
participating in multi-year survey
900 ag producers
participating in REACCH survey

300 MILLION BUSHELS
PRODUCED IN 2013

WHEAT SALES
in 2012
\$1,397,323,000



reacchpna.org

135,000+ page views, **25,000+** unique visitors

52 GRADUATE STUDENTS AND POST-DOCTORAL ASSOCIATES
42 UNDERGRADUATE RESEARCH SUMMER INTERNS

Flux towers collect
216,000
data points/hour
measuring carbon
and water vapor



227 presentations to producers

182 extension fact sheets,
blogs and other products

112 publications

over **800** datasets

210 presentations
at professional meetings

64 videos on YOUTUBE.COM

35 TB+ of data

**THAT'S EQUAL TO
700 BLUE RAY DISCS!**

A single 150-year
climate simulation
uses over
45 billion
meteorological
data points.

compiled by Dianne Daley Laursen (diannedl@uidaho.edu) UI
figure designed by Darci Deaton UI