



**REACCH**  
Regional Approaches  
to Climate Change –  
PACIFIC NORTHWEST AGRICULTURE

# REACCH Data Management Web Module 1: REACCH Data Management and Access

**DM Overview and Web Portal Access**  
*June 20, 2013 - Version 1.0*



Erich Seamon, MS PMP GISP  
Environmental Data Manager  
REACCH PNA  
Regional Approaches to Climate  
Change for Pacific Northwest  
Agriculture  
College of Agricultural and Life  
Sciences  
University of Idaho  
208.885.1230  
[erichs@uidaho.edu](mailto:erichs@uidaho.edu)



**REACCH**  
Regional Approaches  
to Climate Change –  
PACIFIC NORTHWEST AGRICULTURE

## More about REACCHPNA



The **Regional Approaches to Climate Change** project is a coordinated regional agricultural project, funded by the [National Institute for Food and Agriculture](#) to improve the long-term profitability of the cereal production systems in the Pacific Northwest under ongoing and projected climate change, while contributing to climate change mitigation by reducing emissions of greenhouse gases.

REACCH includes efforts in [research](#), [extension](#), and [education](#) that integrates diverse elements including [climate modeling](#), [cropping systems modeling](#), [economics](#), agronomy, crop protection, and others in a trans disciplinary manner.

[www.reacchpna.org](http://www.reacchpna.org)

Summer 2013

REACCH Web Module 1: Data  
Management Overview & Portal Access



**REACCH**  
Regional Approaches  
to Climate Change –  
PACIFIC NORTHWEST AGRICULTURE

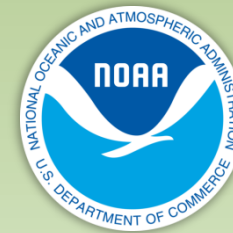
# REACCH Data Management Team



From left: Ed Flathers (REACCH), Erich Seamon (REACCH), Luke Sheneman (NKN)

- Sanford Eigenbrode, Project Director
  - Paul Gessler, PI and Objective 8 lead
  - Von Walden, PI
  - Rick Rupp, PI
  - Erich Seamon, Data Manager
  - Stephen Fricke, Programmer
  - Edward Flathers, Ph.D. student
  - Linda Tedrow, GIS Specialist
- Summer 2013

- Steve Daley-Laursen, NKN
- Greg Gollberg, NKN
- Luke Sheneman, NKN
- David Vollmer, NKN
- Jen Hinds, NKN
- Bruce Godfrey – UI Library
- Jeremy Kenyon – UI Library
- Alex Kyrios – UI Library



REACCH Web Module 1: Data Management Overview & Portal Access





# Access and Important Information Regarding REACCH DM Web Module 1

REACCH Web Modules that are associates with the GIS and Agriculture Short Course (Summer 2013) can be found at the following url:

<https://www.reacchpna.org/mission/education/graduate/courses/gis-aez/>

All REACCH Data Management Web Modules can also be found at the REACCH Media Library. These videos are currently only viewable to logged in REACCH members.

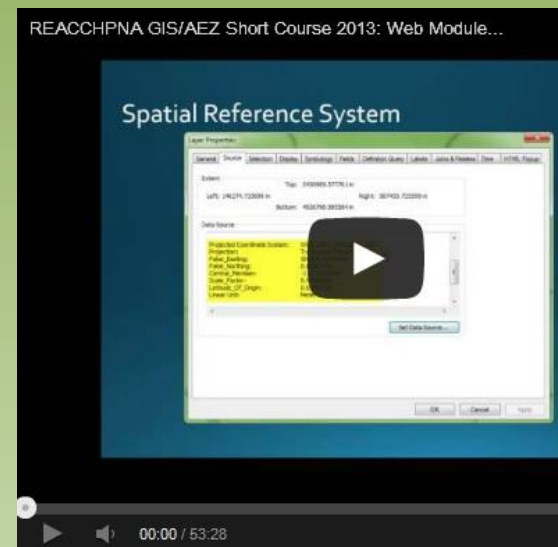
<https://www.reacchpna.org/resources/reactch-media-library/>



**REACCH**  
Regional Approaches  
to Climate Change –  
PACIFIC NORTHWEST AGRICULTURE

# Access and Important Information Regarding REACCH DM Web Module 1

- The REACCH DM Web Modules are meant to assist REACCH members and student to access and use the REACCH Data Management tools
- Alterations and updates may be made to tools as time progresses





**REACCH**  
Regional Approaches  
to Climate Change –  
PACIFIC NORTHWEST AGRICULTURE

# **Summary and Overview of REACCH DM Web Module 1**

- This module (web module 1) is meant to provide
  - a broad overview of the REACCH DM structure
  - Describe how data flows within the structure
  - Outline the login/security approach
  - Outline the web portal, [www.reacchpna.org](http://www.reacchpna.org)

***Web Module 1 lays the foundation for Web Modules 2 (REACCH Data Library) and 3 (REACCH Analysis Library)***





**REACCH**  
Regional Approaches  
to Climate Change –  
PACIFIC NORTHWEST AGRICULTURE

# REACCH Data Overview



Summer 2013

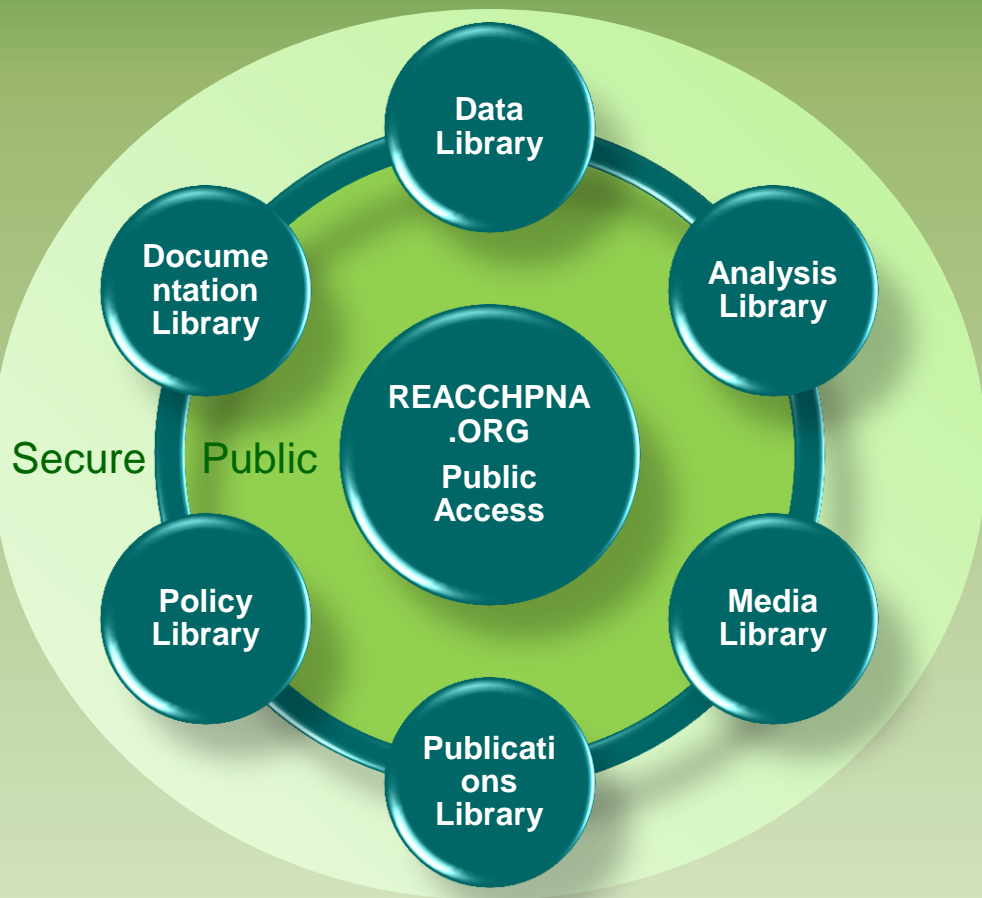
REACCH Web Module 1: Data  
Management Overview & Portal Access



**REACCH**  
Regional Approaches  
to Climate Change –  
PACIFIC NORTHWEST AGRICULTURE

# REACCH Data Management Overview 2013

- Reacchpna.org is the core entry point to accessing information, policy, data, media, and documentation.
- REACCH Libraries are approach to displaying information to the public and to the REACCH team.

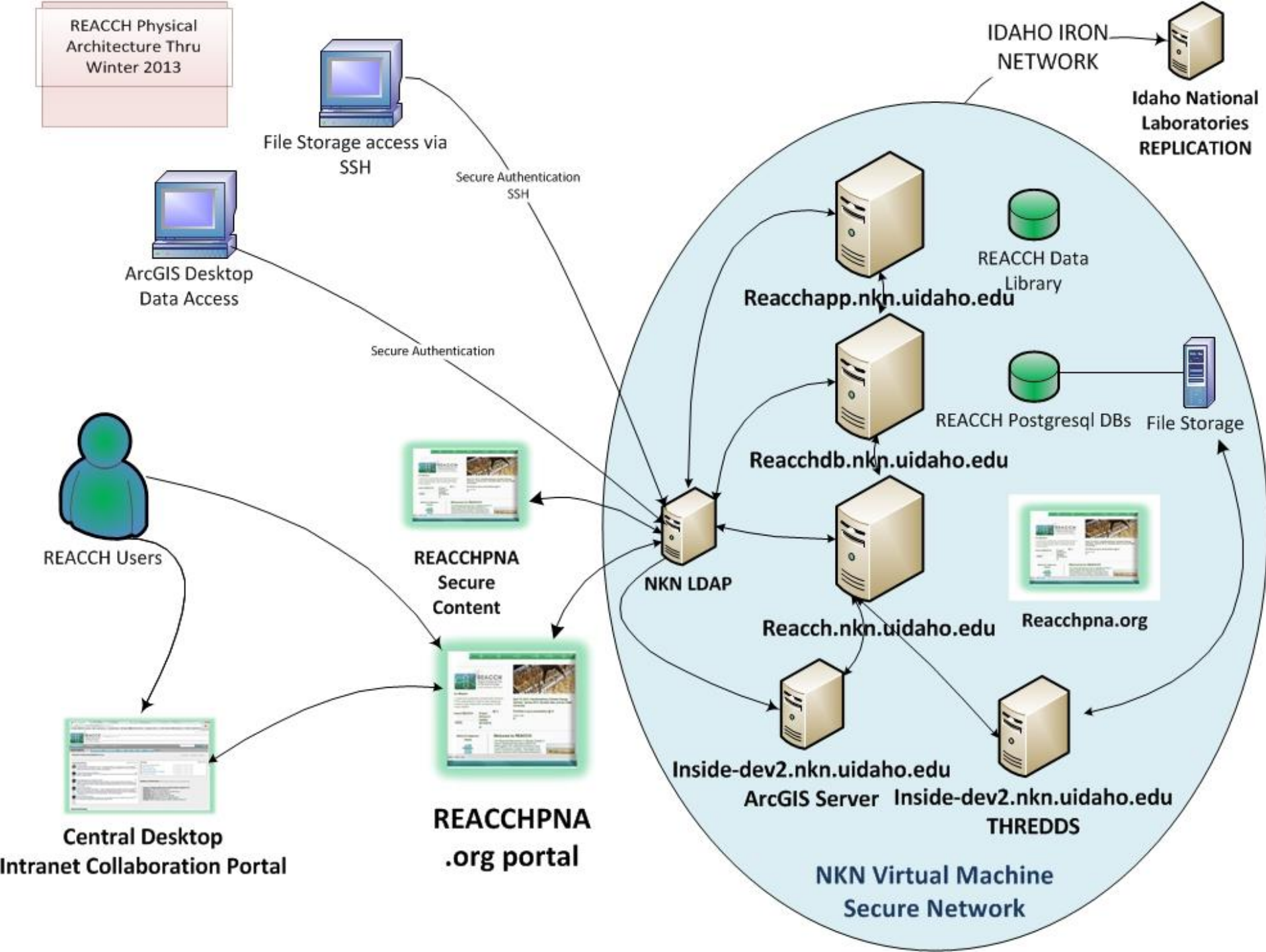


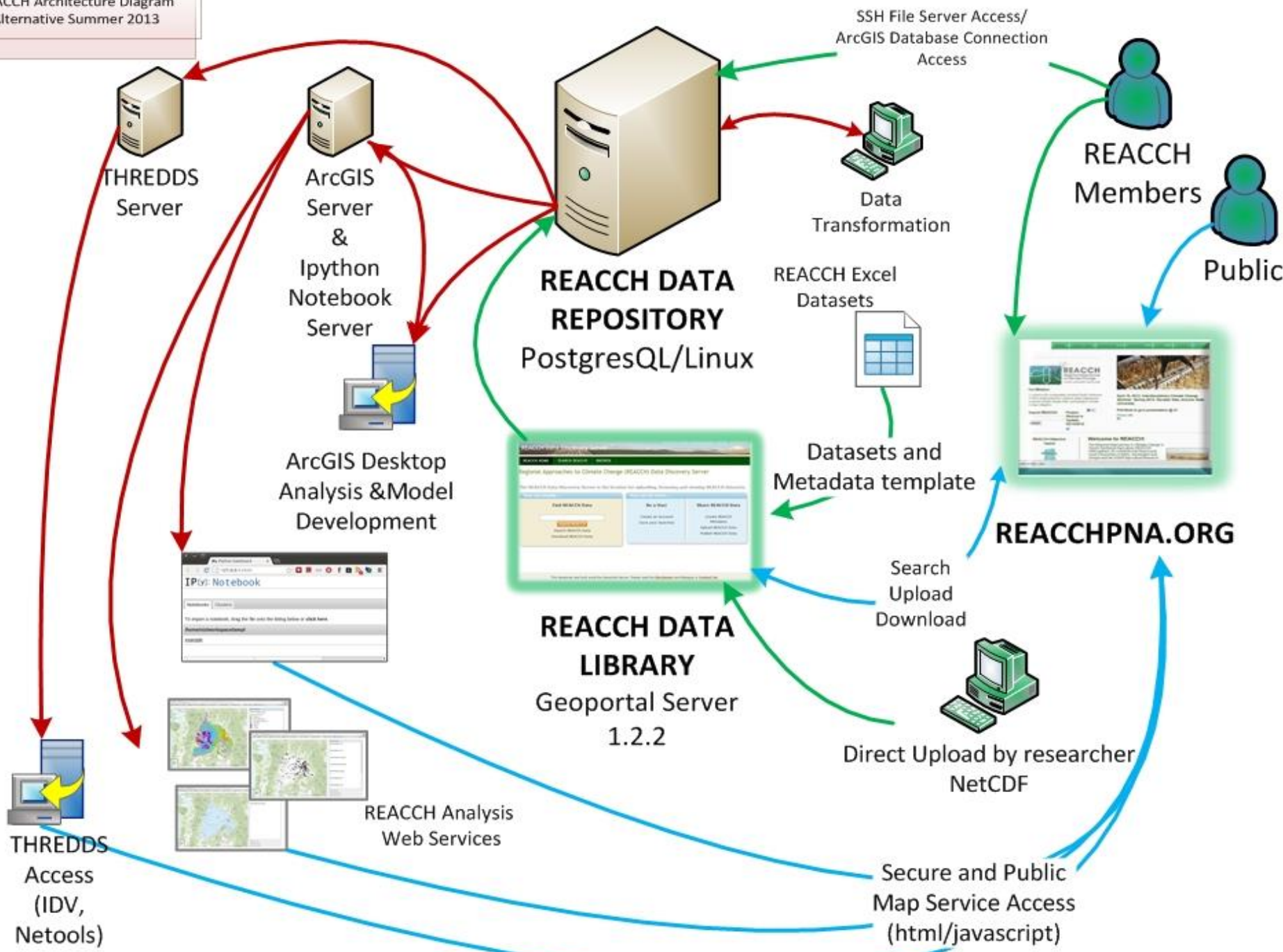
Watch videos of REACCH data management overview @:

<https://www.reacchpna.org/mission/research/cyberinfrastructure/>



REACCH Physical Architecture Thru Winter 2013







**REACCH**  
Regional Approaches  
to Climate Change –  
PACIFIC NORTHWEST AGRICULTURE

# REACCH Web Portal Overview

The screenshot shows the REACCH web portal with a navigation menu (Home, What's New, About, Mission, Resources, Login) and a main banner for 'REACCH Weed Sampling 2012'. Below the banner are social media icons and a 'Welcome to REACCH!' section. The 'Welcome' section includes a user status box, a list of links (system status, provide feedback, how do I?, file a request ticket, review a request), a paragraph about the project's goals, a map of the study area, and a paragraph about the project's interdisciplinary nature and partners.

**Welcome to REACCH!**

- system status
- provide feedback
- how do I?
- file a request ticket
- review a request

You are now logged in as a verified REACCH User. Based on your access rights, you can now review information and gain access to specific REACCH documentation, publications, media, and analytical tools, listed under the Resources tab.

Currently logged in as **erichs**. Sign Out

The Regional Approaches to Climate Change project is a coordinated regional agricultural project, funded by the National Institute for Food and Agriculture to improve the long-term profitability of the cereal production systems in the Pacific Northwest under ongoing and projected climate change, while contributing to climate change mitigation by reducing emissions of greenhouse gases.

REACCH includes efforts in research, extension, and education that integrates diverse elements including climate modeling, cropping systems modeling, economics, agronomy, crop protection, and others in a transdisciplinary manner.

The project is a partnership of four institutions (USDA Agricultural Research Service, University of Idaho, Washington State University, and Oregon State University), with more than 50 scientists, students and postdocs are participating. It also includes an educational element by developing programs for K-12

**REACCH Hires New Extension Specialist**  
May 22th, 2013. Please welcome Kristy Borrelli as REACCH's new Ex...

**REACCH Field Days 2013 Schedule**  
May 22th, 2013. Join REACCH team members at several field days ar...

Summer 2013

REACCH Web Module 1: Data  
Management Overview & Portal Access





# REACCH Web Portal Approach

- Reacchpna.org is the core entry point to accessing information, policy, data, media, and documentation
- Logged in access provided more robust content
- Access to the REACCH Libraries are thru reacchpna.org
- Administrative content, feedback, issue requests – all flow thru reacchpna.org

REACCH  
Regional Approaches  
to Climate Change –  
PACIFIC NORTHWEST AGRICULTURE

Home | What's New | About | Mission | Resources | Login

REACCH Field Days 2013

Welcome to REACCH!

system status  
provide feedback  
how do I?  
file a request ticket  
review a request

You are now logged in as a verified REACCH User. Based on your access rights, you can now review information and gain access to specific REACCH documentation, publications, media, and analytical tools, listed under the Resources tab.

Currently logged in as [username]. Sign Out

REACCH Hires New Extension Specialist  
May 22th, 2013. Please welcome Kristy Borrelli as REACCH's new Extension Specialist.

REACCH Field Days 2013 Schedule  
May 22th, 2013. Join REACCH team members at several field days at [location].

REACCH includes efforts in research, extension, and education that integrates diverse elements including climatic modeling, cropping systems modeling, economics, agronomy, crop protection, and others in a transdisciplinary manner.

The project is a partnership of four institutions (USDA Agricultural Research Service, University of Idaho, Washington State University, and Oregon State University), with more than 50 scientists, students and postdocs are participating. It also includes an educational element by developing programs for K-12.

REACCH Study Area and Research Stations (2013)  
Examine this REACCH data in more detail using REACCH's ArcGIS Online Portal

Summer 2013

REACCH Web Module 1: Data  
Management Overview & Portal Access











**REACCH**  
Regional Approaches  
to Climate Change –  
PACIFIC NORTHWEST AGRICULTURE

# REACCH GIS/AEZ Web Module 1 Assignment

- Login to the [reacchpna.org](http://reacchpna.org) site using your assigned login.
- If you don't have a login, request one using the login request on the home page
- Navigate the *Resources* tab, and become familiar with the listed information.

